



LIGHT & SUSTAINABLE
OFFICES.

BUILT FOR THE FUTURE.



A BUILDING'S FIRST PURPOSE IS TO PROTECT



A building's first purpose is to protect, to shelter its occupants from the five elements of nature: the sun's glare, the wind's noise, the water's intrusion, the fire's threat, and the air's impurities.

In today's world, this protection must extend beyond safety it must **deliver efficiency, enhance comfort, uphold sustainability** and **ensure lasting durability.**



THE NEEDS
OF THE
COMMERCIAL
OFFICE
SEGMENT



Every stakeholder today looks for the same three outcomes:

01

Efficiency,
ensuring faster,
leaner, and smarter
construction.



02

**Occupant comfort
and wellbeing,**
delivering environments
that enhance wellbeing
and productivity through
light, air, acoustics,
and safety.



03

Performance,
where the building
itself becomes a
value-generating,
long-term asset.



The future of office design lies in achieving this balance where cost, comfort, and commercial return work together seamlessly through the power of **light** and **sustainable construction** enhancing the **durability** of the structure.

01

EFFICIENCY
THAT
DELIVERS
SAVINGS



Commercial offices are being redefined by the dual imperatives of **efficiency** and **experience**. Stakeholders seek projects that are efficient to construct and operate, without compromising aesthetics or performance, sustainably. Hence the future of construction is light, sustainable and durable construction.



LIGHT CONSTRUCTION



▶ Light Construction reimagines the way buildings are created by combining advanced materials, modular assemblies, and dry installation to deliver smarter, faster, and more efficient construction.

Saint-Gobain's solutions reduce structural loads, lower resource consumption, while minimising installation time and labour effort. Slimmer envelope and partition solutions further optimise thickness, unlocking additional usable floor area and ultimately enhancing saleable and leasable space.

SUSTAINABLE CONSTRUCTION



▶ Sustainability has become essential for modern office developments as businesses look to reduce energy use, meet evolving regulations, and create healthier environments for occupants.

Saint-Gobain's high-performance glazing, insulation, construction chemicals, acoustic solutions, and plasterboard systems support these goals by lowering operational energy demand, improving daylight and indoor comfort, and reducing overall environmental impact.

DURABLE CONSTRUCTION



▶ Durable Construction focuses on enhancing the strength, protection, and longevity of buildings and infrastructure by addressing long-term performance challenges such as water ingress, corrosion, abrasion, and chemical exposure.

Saint-Gobain's construction chemicals improve concrete durability, protect structural elements from deterioration, and reduce life-cycle costs by extending asset life and minimizing the need for frequent repairs or premature replacement.



Together, light, sustainable and durable construction **lowers capital investment**, accelerates project delivery, and **improves long-term operational economics** delivering measurable value from day one.

02

COMFORT
THAT
ENHANCES
PRODUCTIVITY





An office is more than infrastructure; it's a living environment that directly influences performance. Occupant multi comfort and wellbeing — a blend of **Visual, Solar, Thermal, Acoustic, Indoor Air Quality** and **Safety** is central to employee wellbeing.



Saint-Gobain's High-performance glazing, efficient insulation, and acoustic ceiling systems maintain interior comfort across India's diverse climates. Intelligent partitioning and fire-rated systems enhance hygiene, safety, and aesthetics.

These elements create a workplace that feels bright, quiet, and secure conditions proven to **improve focus, reduce fatigue, and boost productivity.**



When comfort becomes quantifiable, it transforms the building into a true enabler of business success.

03

PERFORMANCE
THAT
SUSTAINS
RETURNS





Light and Sustainable Construction is now a core driver of office performance. It strengthens **asset appeal**, enhances **market value**, and delivers **measurable operational savings**.



▶ Sustainability measures like energy-efficient design and alignment with IGBC, LEED, and GRIHA support these gains by reducing environmental impact and improving building efficiency.



▶ Light-build workplaces demonstrate **stronger utilisation**, **better long-term stability**, and more **predictable lifecycle outcomes**.



▶ Lower energy use and reduced maintenance further contribute to sustained savings over the building's lifetime.



Light and sustainable construction reinforces these advantages by improving build efficiency, accelerating delivery, and elevating overall performance, enabling office environments to achieve **quality**, **comfort**, and **sustainability** while maintaining strong value over time.

BUILDING CODES AND REGULATORY LANDSCAPE





DESIGNING FOR COMPLIANCE AND DELIVERING HIGHER PERFORMANCE.



- ▶ India's building codes define the critical requirements for safety, efficiency, and operational reliability in offices. Saint-Gobain solutions are designed not only to meet these standards but to exceed them—helping offices achieve enhanced energy efficiency, durability, safety, and performance stability for mission-critical operations.



- ▶ **7 out of 10 Green buildings in India use Saint-Gobain products.**

LCAs/EPDs



- ▶ All Saint-Gobain products and systems are supported by more than 3,000 Life Cycle Assessments (LCAs). The outcomes of these assessments, including Environmental Product Declarations (EPDs), are transparently published and independently verified by third parties.



Regulatory codes and green-rating frameworks establish baseline expectations for performance in offices. Saint-Gobain solutions are **engineered to exceed** these requirements.



The National Building Code (NBC 2016) sets standards for fire safety, ventilation, daylight, and indoor environmental quality.



Saint-Gobain solutions exceed benchmarks



Through drywall assemblies, fire-rated glass systems, and fire curtains **tested from 30 minutes up to 240 minutes**



Acoustic Insulation with drywall systems, glass partitions, and window systems, achieving up to **80 dB reduction**



Low-VOC coatings and flooring systems support healthier indoor environmental conditions



Specialty acoustic ceilings and wall panels can achieve **reverberation time under 0.6 sec**



Fire-resistant mortars and coatings **enhance passive fire protection** of critical structural elements



Non-combustible insulation exceeding the requirements of NBC Part 4



Vandal, attack, bullet, and blast-resistant glass systems for protection against physical threats.



Green frameworks such as **IGBC** and **GRIHA** assess daylight, IAQ, material impact, and acoustics.



Saint-Gobain solutions support stronger outcomes



Delivering **daylight factors above 2%**



Achieved NC 30-35 acoustic conditions



Lower embodied carbon with **certified, low-impact materials**: glass, plasterboard, and concrete admixtures



Specialty acoustic ceilings, glass partitions, drywall systems and wall panels help reduce background **noise levels < 35 dBA and reverberation time < 0.4 sec**



Insulated building envelope helps to maintain thermal comfort by **reducing heat load up to 80%**



Compressed insulation packaging **reduces site waste and logistics cost**



Over-deck insulation and waterproofing systems enhance thermal efficiency, contributing to **reduced energy consumption** within buildings.



Energy Conservation and Sustainable Building Code (ECSBC 2024)

defines limits for thermal performance and solar heat gain.

Saint-Gobain drywall, glazing, insulation, construction chemicals, and window solutions outperform the code mandates

Exterior drywall systems offering **30-40% better thermal efficiency**

U-values as low as **0.20-1.6 W/m²K**
SHGC values reaching **0.23**

Reduced HVAC load with Insulation solutions with **R-value 25%** better than ECSBC 2024 requirements for improved occupant comfort

Spray-applied insulation systems and high solar reflective coatings improve **building thermal performance** and reduce **energy consumption**



LEED further measures EUI and envelope performance

Saint-Gobain drywall, glazing, insulation, construction chemicals, and window solutions contribute to 8-12 LEED EA points by reducing HVAC loads and improving EUI

U-values 0.6 to 0.8 W/m²K with exterior drywall system and **1.0-1.6 W/m²K & SHGC down to 0.23** with high-performance glazing

High-efficiency insulation and verified disclosures such as **EPDs and low-VOC certifications**

Help projects document performance gains across **Energy, IEQ, and Materials credits with greater reliability**

Lower embodied carbon with **certified, low-impact materials**: glass, plasterboard, and concrete admixtures

Credits In Material, Sustainability, and **IAQ - up to 20 Points**

Low Thermal Conductivity and Recyclable materials **contribute to sustainable material credits**

PU spray-applied foam insulation over roofs (**K-value ~0.028 W/m·K**), along with **high solar reflective coatings (SRI >100)** enhances **thermal efficiency** and supports improved **energy performance**



High-efficiency glazing, windows, hardware, insulation, drywalls, specialty ceilings & wall panels, gypsum plasters, fire and acoustic-rated systems, and construction chemicals collectively strengthen every dimension of multi comfort, enabling workplaces that deliver higher efficiency, enhanced occupant **comfort** and **wellbeing**, and **long-term performance** beyond mandated standards.

LIGHT & SUSTAINABLE SOLUTIONS FOR GREEN BUILDINGS

38
POINTS

HIGHEST CONTRIBUTION OF GREEN RATING POINTS



2
POINTS



PASSIVE ARCHITECTURE

HIGH PERFORMANCE GLASS |
FIRE RATED GLASS SYSTEMS |
HIGH SECURITY GLASS SYSTEMS

3
POINTS



DAYLIGHTING & OUTDOOR VIEWS

HIGH PERFORMANCE GLASS |
FIRE RATED GLASS SYSTEMS |
HIGH SECURITY GLASS SYSTEMS

15
POINTS



ENERGY EFFICIENCY

HIGH PERFORMANCE GLASS |
FIRE RATED GLASS SYSTEMS |
HIGH SECURITY GLASS SYSTEMS |
THERMAL EFFICIENT DRYWALL & CEILING SYSTEM |
INSULATION

1
POINT



LOW EMITTING MATERIALS

HIGH-PERFORMANCE GLASS |
LACQUERED GLASS | PLASTERBOARDS |
PLASTERS | SPECIALTY CEILINGS AND WALL PANELS |
INSULATION | CONSTRUCTION CHEMICALS

5
POINTS



GREENPRO CERTIFICATION

HIGH PERFORMANCE GLASS |
FIRE RATED GLASS SYSTEMS |
HIGH SECURITY GLASS SYSTEMS |
PLASTERBOARDS | PLASTERS |
SPECIALTY CEILINGS AND WALL PANELS |
INSULATION | CONSTRUCTION CHEMICALS

1
POINT



OCCUPANT WELL BEING FACILITIES

HIGH PERFORMANCE GLASS | LACQUERED GLASS |
FIRE RATED GLASS SYSTEMS |
HIGH SECURITY GLASS SYSTEMS |
PLASTERBOARDS | PLASTERS |
SPECIALTY CEILINGS AND WALL PANELS | INSULATION

2
POINTS



RECYCLED CONTENT

HIGH PERFORMANCE GLASS |
LACQUERED GLASS | FIRE RATED GLASS SYSTEMS |
HIGH SECURITY GLASS SYSTEMS | PLASTERBOARDS |
PLASTERS | SPECIALTY CEILINGS AND WALL PANELS |
INSULATION

1
POINT



OPTIMIZATION IN STRUCTURAL DESIGN

HIGH PERFORMANCE GLASS | LACQUERED GLASS |
FIRE RATED GLASS SYSTEMS |
HIGH SECURITY GLASS SYSTEMS |
DRYWALLS | PLASTERS |
CONSTRUCTION CHEMICALS

2
POINTS



LOCAL MATERIALS

HIGH PERFORMANCE GLASS |
FIRE RATED GLASS SYSTEMS |
HIGH SECURITY GLASS SYSTEMS |
LACQUERED GLASS | PLASTERBOARDS |
PLASTERS | SPECIALTY CEILINGS AND WALL PANELS |
INSULATION | CONSTRUCTION CHEMICALS

1
POINT



WATER USE REDUCTION FOR CONSTRUCTION

DRYWALLS & CEILING SYSTEM |
PLASTERS |
CONSTRUCTION CHEMICALS

1
POINT



HANDLING OF WASTE DURING CONSTRUCTION

HIGH PERFORMANCE GLASS | LACQUERED GLASS |
FIRE RATED GLASS SYSTEMS |
HIGH SECURITY GLASS SYSTEMS |
PLASTERBOARDS | PLASTERS |
SPECIALTY CEILINGS AND WALL PANELS | INSULATION

3
POINTS



EXEMPLARY PERFORMANCE

HIGH PERFORMANCE GLASS | LACQUERED GLASS |
FIRE RATED GLASS SYSTEMS |
HIGH SECURITY GLASS SYSTEMS |
PLASTERBOARDS | PLASTERS |
SPECIALTY CEILINGS AND WALL PANELS |
INSULATION | CONSTRUCTION CHEMICALS

1
POINT



INNOVATION WITH LOW CARBON MATERIALS

LOW CARBON GLASS | LOW CARBON PLASTERBOARD |
LOW CARBON PLASTERS

THE BUILDING - A 360° VIEW

SOLUTIONS FOR EVERY
SURFACE AND SYSTEM

PRE-CONSTRUCTION

Waterproofing Solutions

Innovative Concrete Solutions

External Drywall

Concrete Admixtures

Joint Sealants

Surface Treatments

Grouts

Anchors

HVAC Systems

ENVELOPE

High-Performance Glazing

Electrochromic Glazing

High Performance Protective
Coatings

UPVC & Aluminium Windows

Fire Rated & High Security
Glazing

Tile/Stone Adhesives
and Grouts

Fire Rated &
High Security Glazing

Sealants

Railings



INTERIORS

Concrete Repair Systems

Acoustic Ceiling Tiles

Gypsum Grid Ceiling

Specialty Ceilings and Wall Panels

Drywall Partitions

Wall Covering

Roof Insulation System

Lacquered Glass

Waterproofing Solutions and Sealants

Industrial Flooring Solutions

Pre-Insulated Duct System

Underdeck Insulation

Fire Curtains

Mirrors

Tile Adhesives and Grouts

Privacy Glass





SOLUTION SNAPSHOT



FOUNDATION

High-performance waterproofing membranes and integral waterproofing systems provide zero-failure protection against water ingress - safeguarding critical infrastructure and ensuring long-term durability of basements and foundation in Offices.



SUPERSTRUCTURE

Advanced concrete admixtures and low-carbon technologies improve density, reduce permeability, and enhance durability - supporting high-load structural performance and long-term reliability.



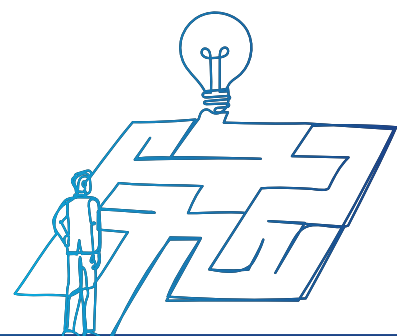
FACADES

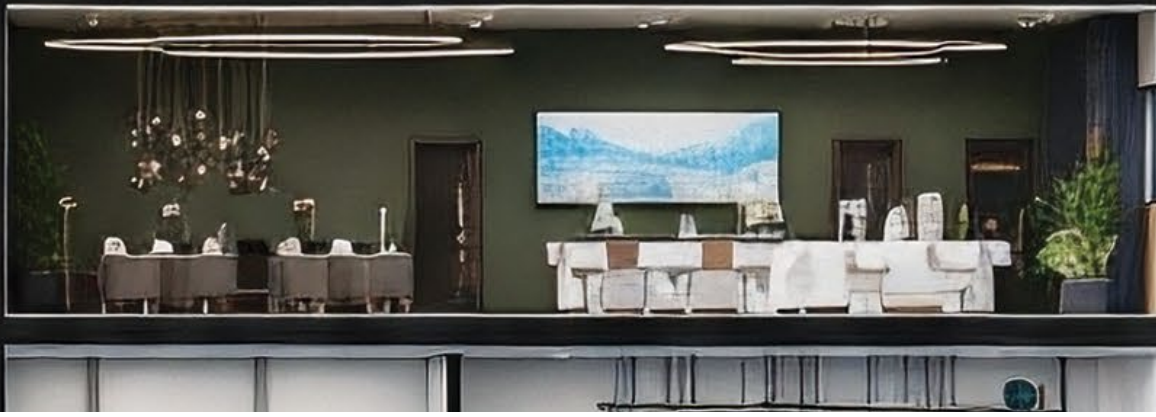
High-performance Low Carbon Glass (also in jumbo sizes), Vetrotech high-security glass system solutions, Weatherproof Exterior Drywall using Glasroc X, and High Performance Façade sealants and Surface treatments combine to deliver durable, weather-resistant, physically secure and energy-efficient façades for reliable Offices' performance. Automatic Sliding Doors systems and Spider Fittings support façade performance and structural durability. Glass Wool and Stone Wool for Curtain Wall, Stone Wool for Fire and Smoke Seal Applications.



FLOORING

Specialised anti-static (ESD) flooring systems provide controlled electrostatic discharge, high load-bearing capacity, and superior abrasion and scratch resistance - ensuring protection of sensitive equipment and low-maintenance, long-life performance.





ROOFING

Seamless waterproofing systems and thermal insulation solutions protect against water ingress and heat gain - ensuring long-term durability and improved energy efficiency of the building envelope.



SPECIALITY CEILING & WALL PANELS

Ecophon® acoustic ceilings for offices. Fade® One Acoustic Plaster; Ecophon® Solo Acoustic Free Hanging Panels; Perforated Gypsum Boards ; Metlance™ Metal Architectural Ceilings; Ecophon® Glasswool Acoustic Wall ceiling panels; SG Anutone® Strand® Woodwool/ Salon® wooden perforated acoustic Ceilings and Wall Panels offer indoor acoustic comfort and design.



INTERNAL WALLS & PARTITIONS

Gypsum Drywalls & Partitions for Dry & Wet Areas, Glass Partitions, Automatic Sliding Doors and Lacquered Walls, Modular Acoustic Pods, Glassfibre Wallcoverings, Gypsum Plaster for walls and ceilings, CURTIVIA fire curtains and Vetrotech fire-rated glass system solutions, and Fire-rated Plasterboards from Saint-Gobain Gyproc fortify the internal walls & partition systems of Offices. Acoustic window systems ensure noise control for focused environments. Shower enclosures ensure hygiene, durability, and moisture resistance. Sound and Fire Insulation for Drywall Partitions.



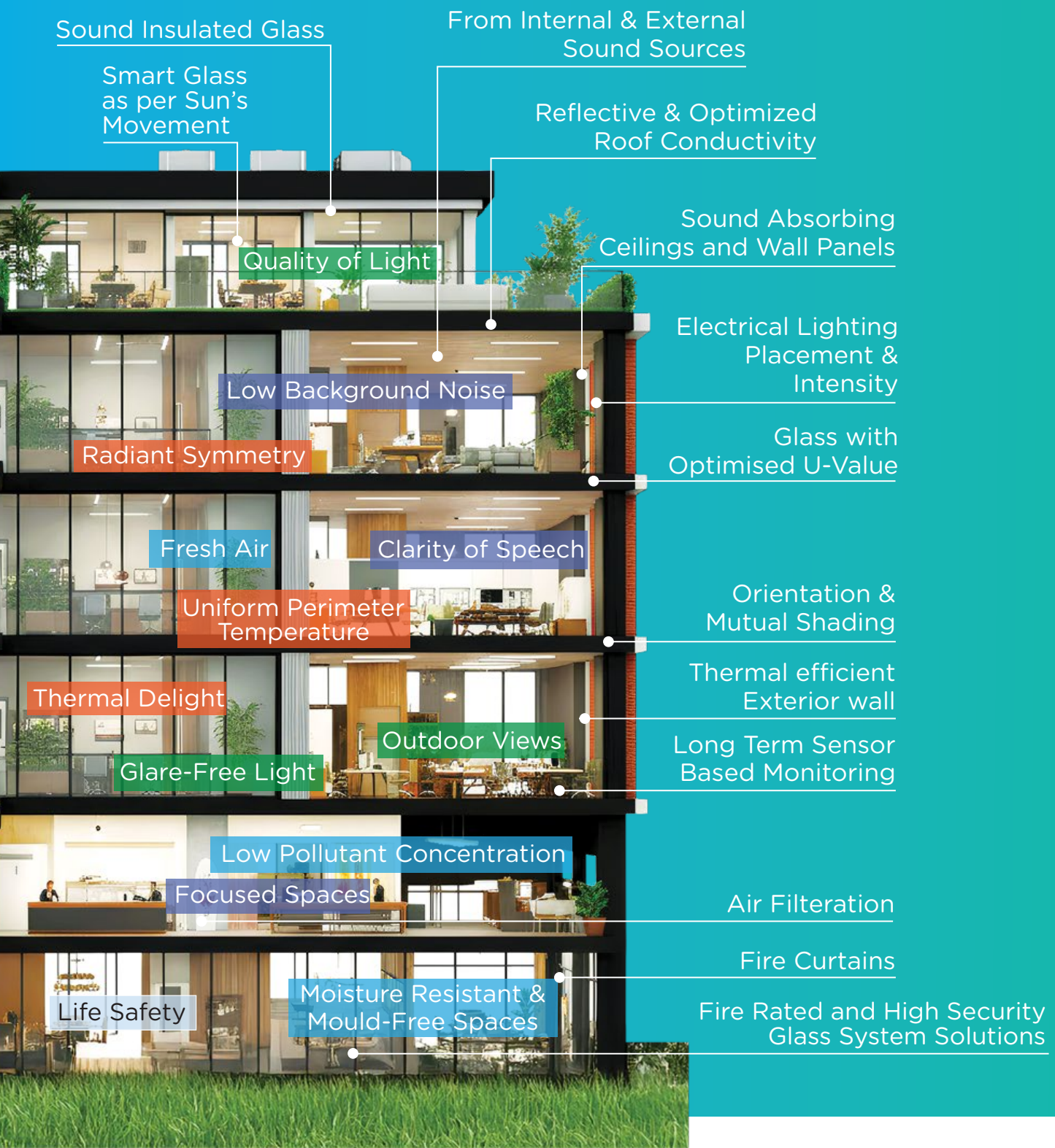
VENTILATION

Saint-Gobain CLIMAVER® duct systems offer lightweight, airtight, pre-insulated ducts with excellent thermal and acoustic performance for efficient ventilation of Offices. For added safety, fire-rated duct solutions can be installed. In addition, Tekbond Fire Rated PU Foam and Tekbond High Performance PU Foam are recommended for sealing duct penetrations effectively. Glass Fiber Insect Screens in Doors & Windows. Glass Fiber Technical Textiles for Passive Fire Protection.

ENABLING MULTI COMFORT AND OCCUPANT WELLBEING



- SOLAR/THERMAL COMFORT
- VISUAL COMFORT
- ACOUSTIC COMFORT
- INDOOR AIR QUALITY
- SAFETY



LIGHT AND
SUSTAINABLE
SOLUTIONS
FROM
SAINT-GOBAIN





GLASS FOR FACADES

Aesthetics | Energy Efficient | Light Build



DRYWALL & SPECIALTY CEILINGS

Light Weight | Acoustic Comfort



GLASS FOR INTERIORS

Aesthetics | NIL VOCs | Light Build | Life Safety



HVAC SYSTEMS & INSULATION

Thermal & Acoustic Comfort



PLASTERS & CONSTRUCTION CHEMICALS

Lower Resources
Alternate to Sand Cement
Reduced Water Consumption

COMPREHENSIVE PORTFOLIO OF CONSTRUCTION SOLUTIONS

Clear Glass

Tinted Glass

Mirrors

Solar Control Glass

Thermal Insulation Glass

Toughened Lacquered Glass

Fire Safety Glass System Solutions

Fire Curtains

UPVC & Aluminium Doors/Shower Cubicles

Electrochromic Glass

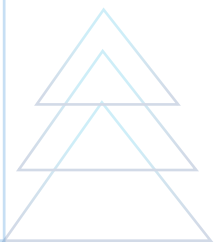
Privacy Glass

Railings

Hardware, Partitions, Pods

Wall Coverings

High Security Glass System Solutions



Plaster Board Drywalls & Dry Lining Systems:

- Dry Area Applications
- Wet Area Applications
- Shaft walls
- Fire Rated Walls
- Acoustic Walls
- Exterior Walls
- Heavy Impact Walls

Ceiling System & Tiles

- Architectural Metal ceilings
- Ceiling Tiles & Board (Gypsum)

Gypsum Plasters

- Value Added Plasters
- High Coverage Plaster
- Moisture Resistant Plaster
- Internal Applications, Accessories

Metal Framing & Accessories

Jointing and Finishing Products

Gyproc Systems & Solutions



Acoustic Modular Ceiling

Acoustic Free Hanging Panels

Acoustic Wall Panels

Acoustic Plaster



Drywall Insulation

Façade Insulation

Underdeck Insulation

Flexible Duct

Pre-Formed Pipe Sections

Acoustic Panels



Drywall Insulation

Overdeck Insulation

Façade Insulation (Smoke Seal)



Pre-Insulated Duct System



Sealants

Aerosols

Adhesives

Accessories



**Waterproofing Systems
(basement to roof)**

Concrete Admixtures

Concrete Repair Systems

Protective Coatings

Industrial Flooring Solutions

Joint Sealants

Structural Adhesives

Cement Grinding Aids

Surface Treatments:

- Wide range of curing compounds
- Shutter release agents

Anchors:

- Chemical anchors for challenging construction needs

Grouts (cement and resin-based anchoring systems)

FOSROC



Concrete Solutions:

- Ready-Mix Concrete
- High Flow Concrete
- Low Carbon Concrete
- Integral Waterproofing
- Challenging Aggregate Solutions
- Self-Compacting Concrete (SCC)
- Underground Construction
- Curing Agents
- Precast (Wet/Dry)
- Demoulding Agents
- Lightweight Concrete

Cement Additives:

- Next Generation Activators
- Performance Activators
- Grinding Aids for Cement
- Masonry Additives
- Grinding Aids for Minerals

Abrasive Solutions for Surface Preparation & Finishing

- Metal, Wood, Concrete Cutting and Wheels and Discs
- Wall and wood surface finishing discs, sheets and cloth rolls
- Core bits, Drill bits and screw bits



NORTON

SAINT-GOBAIN

Tile & Stone Adhesives:

- Cementitious, Polymer Modified, Epoxy/PU Adhesives

Tile & Stone Grouts:

- Cementitious, Epoxy Grouts

Tile & Stone Care:

- Cleaners, Impregnators and Sealers

Waterproofing:

- Cementitious, primers, acrylic, Polyurethane waterproofing

Wall Construction Solutions:

- Adhesives for fixing AAC Blocks



WHY
PARTNER
WITH
SAINT-GOBAIN?





Modern buildings demand solutions that minimise environmental impact while enhancing comfort, safety and efficiency.

Saint-Gobain delivers this through a sustainability-led innovation, manufacturing, and specification ecosystem. This is powered by continuous R&D tailored to hot and humid climates. As one of India's largest green, energy-efficient plant networks, Saint-Gobain provides end-to-end specification support and a fully digitalised approach that drives efficiency, accuracy, and low-carbon outcomes.



Continuous innovation is driven by the Saint-Gobain Research India (SGRI), where deep insights fuel advanced material science and rigorous application testing; powering **next-generation, science-backed solutions** for the built environment.

Regional manufacturing ensures consistent availability, reduced logistics emissions and reliable timelines. This is strengthened by Saint-Gobain Research India (SGRI), advanced digital tools and expert technical teams that convert science and innovation into better-performing buildings.

Expert-led advice from a specialised technological group - Design Core, delivers end-to-end specification support, reinforced by accurate modelling and compliance guidance for safe, sustainable designs.

01

INSIGHTS > SCIENCE > SOLUTIONS
END-TO-END DELIVERANCE



INDIA'S EPICENTER FOR MAKING INSIGHTS A REALITY

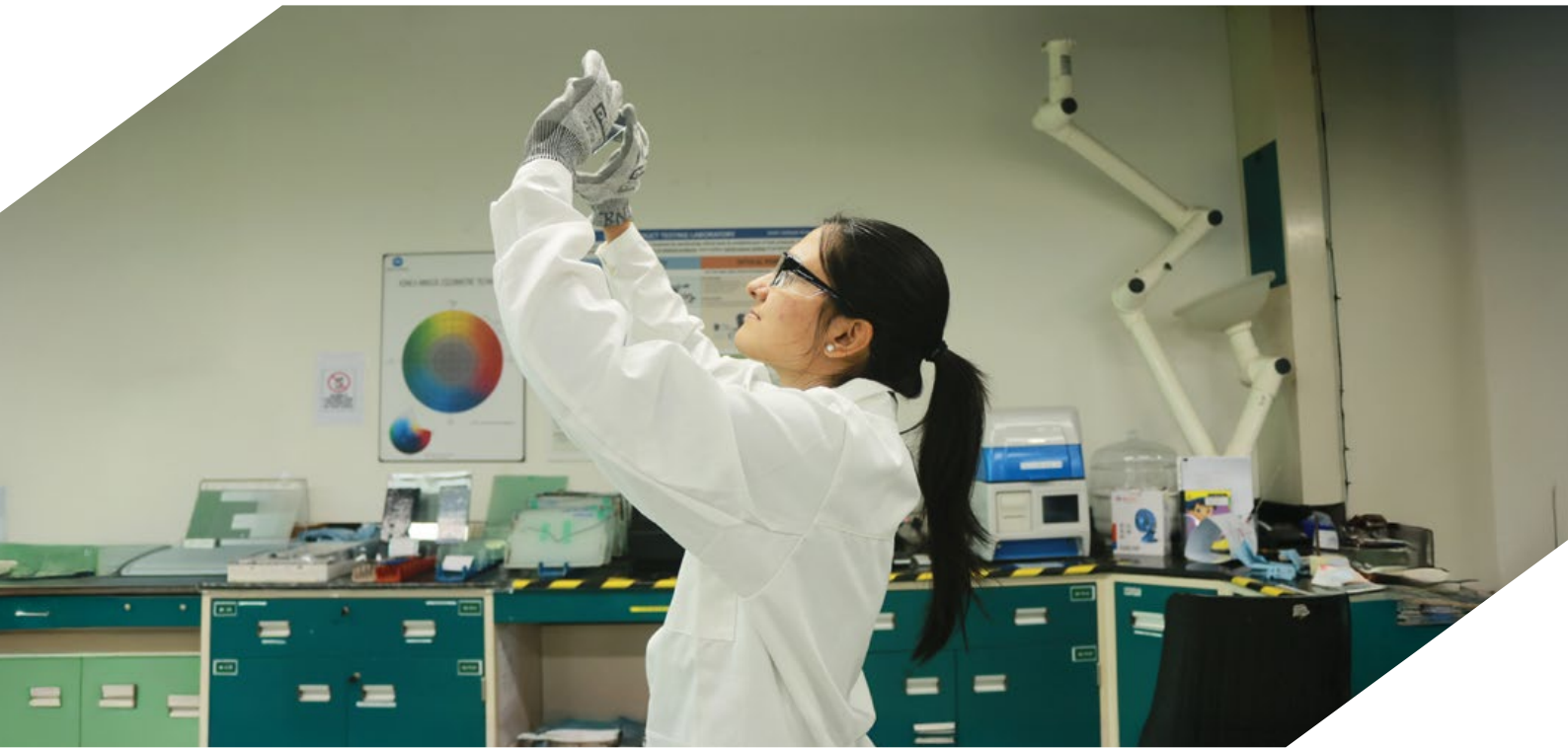


▶ **Saint-Gobain Research India (SGRI) – India's largest private R&D centre for construction materials and solutions** is located at **IIT-Madras Research Park**. SGRI brings together materials scientists, simulation experts and building physicists working on **thermal behaviour, acoustics, daylight, solar control, lifecycle impact** and **material safety**.

Insights from this research ecosystem feed directly into the design of **glass, insulation, gypsum systems, ceilings** and **construction chemicals**.



▶ At SGRI, evidence becomes prototypes, **prototypes become validated assemblies**, and these lead to project specifications – ensuring every system not only meets regulatory thresholds but consistently exceeds them.



Lab testing for visual, solar, thermal, acoustic, fire etc.



Prototyping and pilot lines for Indian climatic conditions



Simulation-led development producing validated assemblies

25+ LABS | 200+ PRODUCT LAUNCHES | 250+ SCIENTISTS | 280+ PATENTS

**1 OUT OF 4 PRODUCTS SOLD TODAY
IN INDIA DID NOT EXIST 5 YEARS AGO**

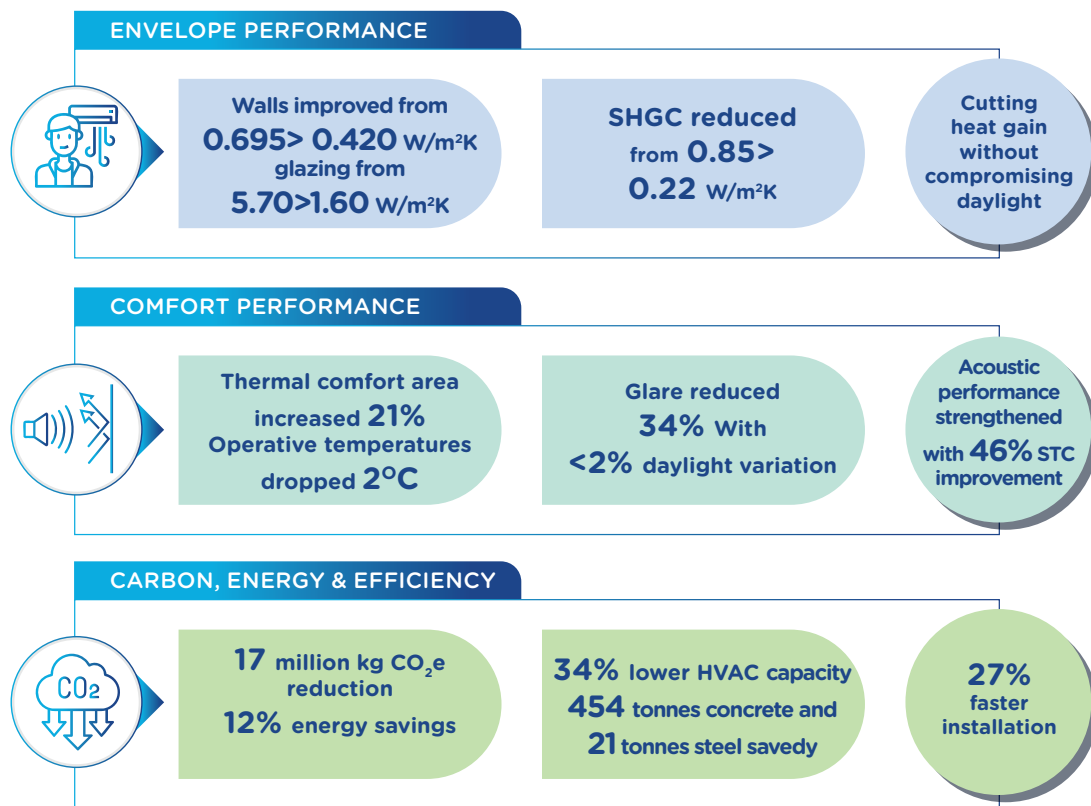
01A

FROM INSIGHTS
TO MEASURABLE
BUILDING PERFORMANCE





A comparative simulation of a Base Case vs. a Design Case using Saint-Gobain systems demonstrates the impact of material science on building outcomes.



The Design Case consistently surpasses compliance across thermal, solar, visual, acoustic and environmental metrics, delivering better comfort, lower energy demand, reduced embodied impact, faster construction and stronger lifecycle value.

WHY THIS MATTERS

- 01** Direct access to research-backed products and validated assemblies reduces specification risk.
- 02** Regional manufacturing shortens supply chains and improves predictability.
- 03** Solutions are developed with decarbonisation targets in mind, helping projects meet regulatory and voluntary sustainability goals.

02

MANUFACTURING EXCELLENCE: GREEN, REGIONAL AND RESPONSIBLE





Saint-Gobain's India operations are built on the principles of combining scale, sustainability and localisation.

GREEN MANUFACTURING FOOTPRINT



Saint-Gobain operates an extensive network of plants across India, strategically located to reduce transport emissions and ensure material availability for regional markets. These facilities integrate renewable energy, waste heat recovery, water circularity and advanced monitoring systems to minimise environmental impact. These initiatives have led to a **34% reduction in Scope 1 and 2 emissions** from earlier baselines, amplified by sustained investments in electrification, fuel switching and process optimisation.

LOCAL MATERIAL AVAILABILITY



Regional manufacturing ensures that high-performance glass, specialty ceiling tile, insulation, construction chemicals, waterproofing systems, gypsum boards and adhesives are available consistently across the country. This reduces lead times, stabilises project schedules and limits the carbon footprint associated with long-distance logistics.

SUSTAINABLE MANUFACTURING PRACTICES



Across plants, waste reduction and circularity principles drive production. Glass cullet is recycled back into the float process; gypsum waste is reintroduced into plasterboard manufacturing; rainwater and treated wastewater increase water circularity.

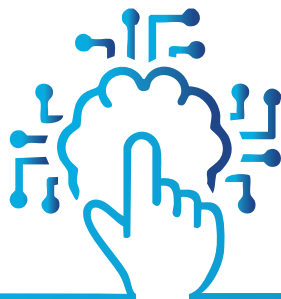
WHY THIS MATTERS



- 01 Sustainable, regionally distributed manufacturing lowers embodied impacts while ensuring predictable supply.
- 02 This translates to reduced logistics emissions, consistent quality and dependable timelines, strengthening project certainty and supporting green-building objectives.
- 03 In large projects with compressed timelines, this alignment between production and proximity becomes a decisive advantage. Saint-Gobain's integrated model strengthens the sustainability credentials of every delivered product.

03

DIGITAL TOOLS FOR PERFORMANCE DRIVEN DESIGN






Saint-Gobain's digital layer accelerates decision-making and reduces design risk. The company provides simulation and specification tools—Calumen/Calumen Live for glazing and performance evaluation is available to design teams for comparative glazing selection and performance modelling.

Calumen supports multi-parameter tradeoffs (U-value, SHGC, VLT, acoustic inputs) and produces outputs suitable for early design and final specification. Saint-Gobain also provides Tech Calc, a versatile engineering and technical calculation tool that simplifies complex mathematical and performance computations.

Tech Calc supports built-in thermal and energy-saving calculations for insulation systems, enabling accurate assessment of material efficiency. The platform automates complex formulas into clear, simplified outputs, reducing manual effort and improving reliability.

Beyond tools, Saint-Gobain offers BIM-ready content and technical integration pathways: from BIM objects to visualisers and specification packages. The firm's BIM capability has been developed over years to deliver interoperable models and data for use in collaborative project environments.

WHY THIS MATTERS

- 
- 01 Rapid glazing and envelope comparisons with project-specific data (via Calumen) reduce iteration time.
 - 02 Built-in performance calculations with technical validation.
 - 03 BIM objects and digital specs simplify handover and integration into design workflows.
 - 04 Expert simulations (daylight, thermal, acoustic, wind) de-risk design choices and speed approvals.

04

DESIGN CORE:
EXPERT-LED
TECHNICAL AND
SPECIFICATION
SUPPORT





Design Core is a specialised technical group that works with architects, façade consultants, acoustic consultants and developers to refine design intent and specification.

The team supports:

- 1 Daylight & glare analysis
- 2 Thermal performance and thickness optimisation
- 3 Wind load checks for façades
- 4 System Testing, BIM-Revit Modeling/Families
- 5 Acoustic modelling for partitions and ceilings
- 6 Fire and code compliance guidance
- 7 Concrete Technology (CT) Support

Inputs from Design Core allow projects to validate decisions early, ensure compliance with NBC, ECBC and green frameworks, and document data for IGBC, GRIHA and LEED evidence packages.

DIGITAL ASSURANCE ACROSS THE LIFECYCLE

From concept modelling to final specification and site validation, digitalisation ensures that performance assumptions are not lost through the construction process.

The integration of BIM, software tools, analytics and on-ground technical support creates continuity from design to delivery.

WHY THIS MATTERS

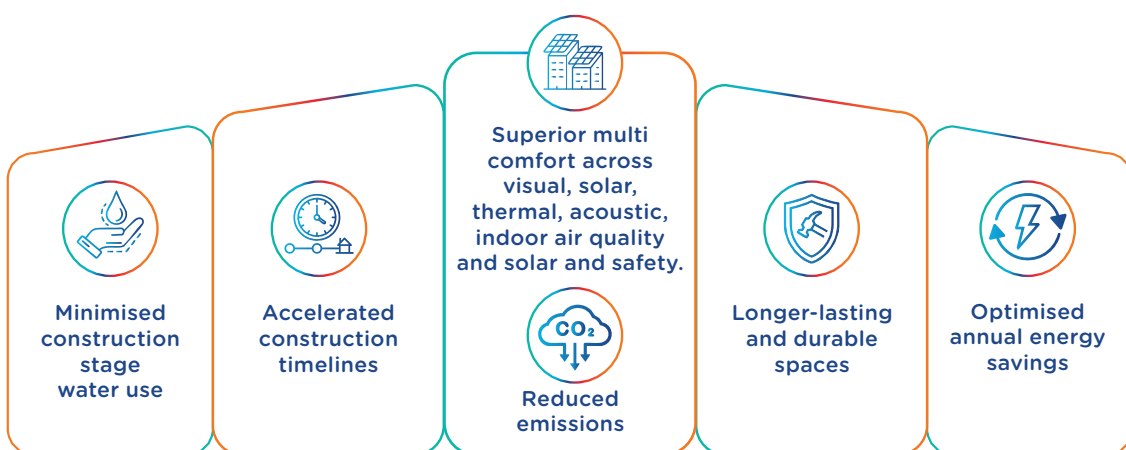
- 01 Early-stage concept modelling (daylight, thermal, acoustic).
- 02 Advanced simulation, reliable manufacturing and precise specification support give projects a partner that understands performance not as a claim but as a measurable, science-backed outcome — helping create offices that are efficient, comfortable and ready for the future.





MULTI COMFORT AND OCCUPANT WELLBEING, DELIVERED IN A LIGHT AND SUSTAINABLE WAY.

Saint-Gobain's light and sustainable construction systems deliver tangible value across the entire building lifecycle — reducing impact, enhancing comfort and improving performance where it matters most.



A smarter way to build — lighter on resources, stronger in performance and ready for the future.

Saint-Gobain: Delivering multi comfort and occupant well-being in a light and sustainable way.



BPCL REGIONAL OFFICE
CHENNAI
LACQUERED GLASS FOR INTERIORS



ONE BKC
MUMBAI
CONSTRUCTION CHEMICALS



COLT
DELHI
SPECIALTY
CEILING SOLUTIONS

HERE SOLUTIONS
MUMBAI
SPECIALTY
CEILING SOLUTIONS



PRESTIGE MINSK
BANGALORE
HIGH PERFORMANCE GLASS
FOR FACADES

INTERNATIONAL TECH PARK
GURGAON
HIGH PERFORMANCE GLASS
FOR FACADES

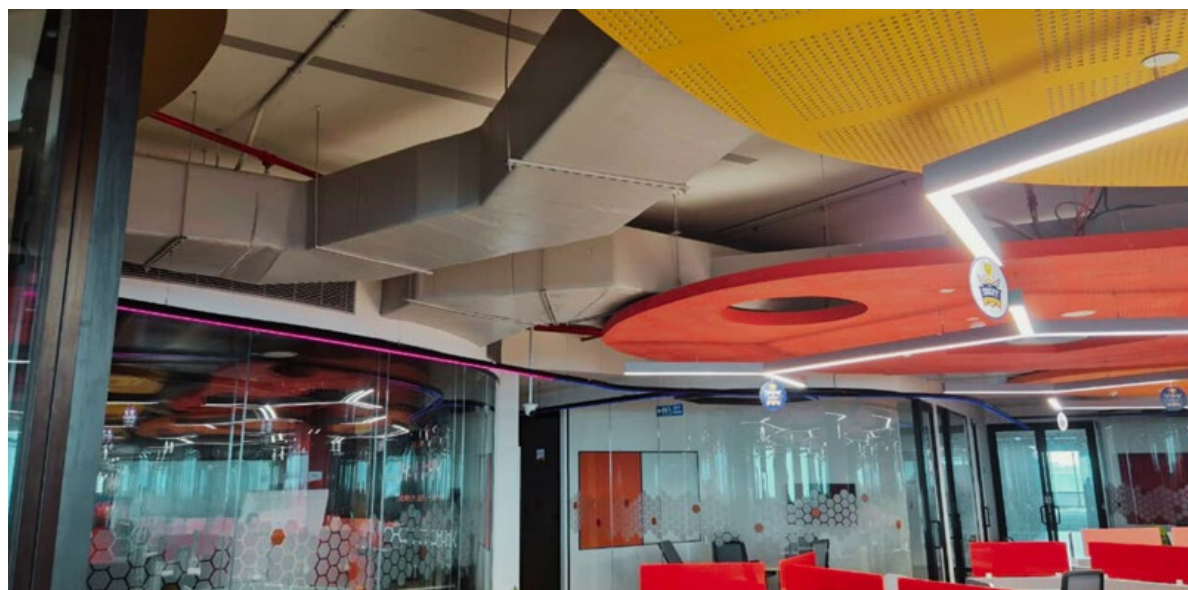


TOGETHER, MAKING THE WORLD A BETTER HOME



INFOSYS
BANGALORE
DRYWALL & CEILING
SOLUTIONS

ACCENTURE
BANGALORE
DRYWALL & CEILING
SOLUTIONS



SAINT-GOBAIN
INDEC
CHENNAI
INSULATION SOLUTIONS:
PRE-INSULATED
DUCT SYSTEM

ICONIC CORENTHUM
NOIDA
ADHESIVE AND
SEALANT SOLUTIONS



PEPSICO OFFICE
DELHI
FIRE SAFETY
GLAZING SOLUTIONS



**BROOKEFIELD
PROPERTIES**
DELHI
FIRE SAFETY
GLAZING SOLUTIONS

TOGETHER, MAKING THE WORLD A BETTER HOME



**SKCL
HARMONY SQUARE
CHENNAI**
TOUGHENED
LACQUERED GLASS

ADVANT IT PARK
TOUGHENED
LACQUERED GLASS



**BPCL REGIONAL
OFFICE**
TOUGHENED
LACQUERED GLASS

EXPLORE OUR OFFERINGS ACROSS OTHER SEGMENTS:



AIRPORTS



DATA CENTERS



EDUCATIONAL



HEALTHCARE



HOSPITALITY



RESIDENTIAL



**Saint-Gobain
India Private Limited**

5th Level, Leela Business Park,
Andheri - Kurla Road,
Vijay Nagar Colony West, Marol,
Andheri East, Mumbai,
Maharashtra - 400059, India.

<http://www.saint-gobain.co.in>